



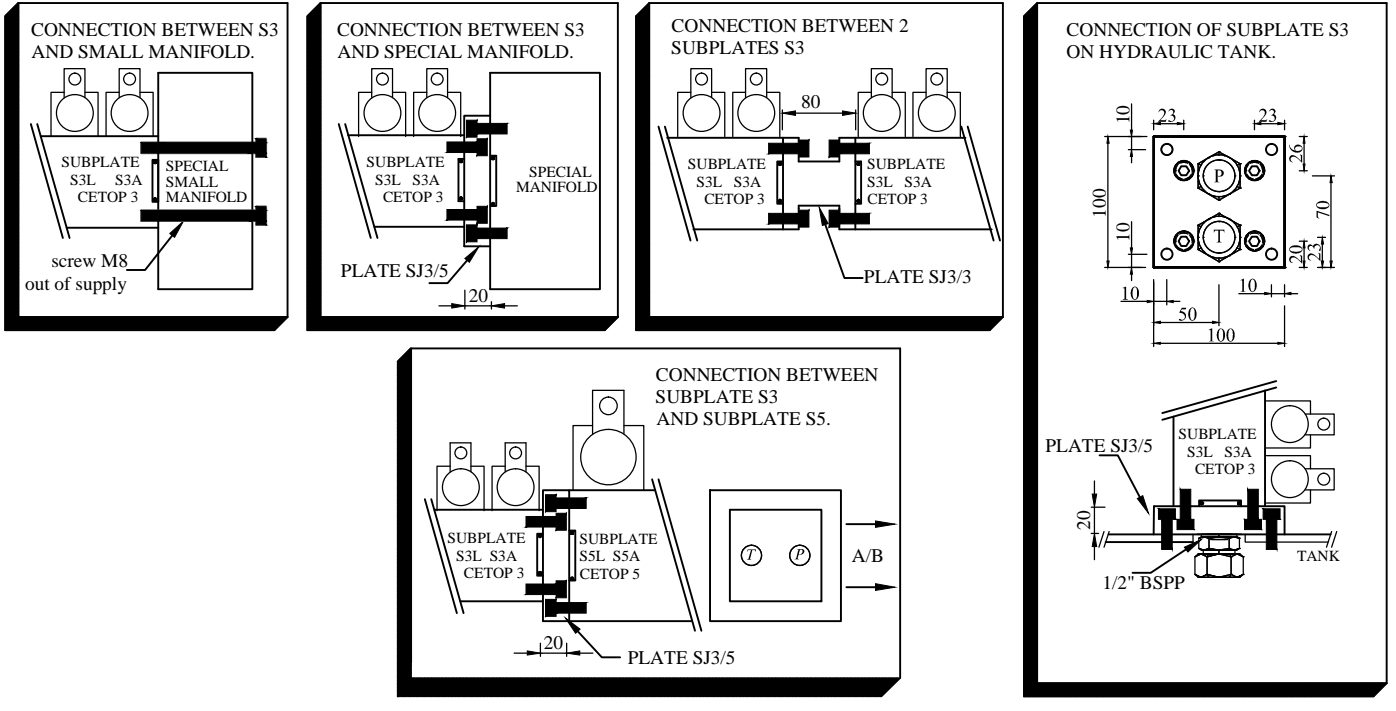
JUNCTION PLATE FOR MANIFOLD

SJ

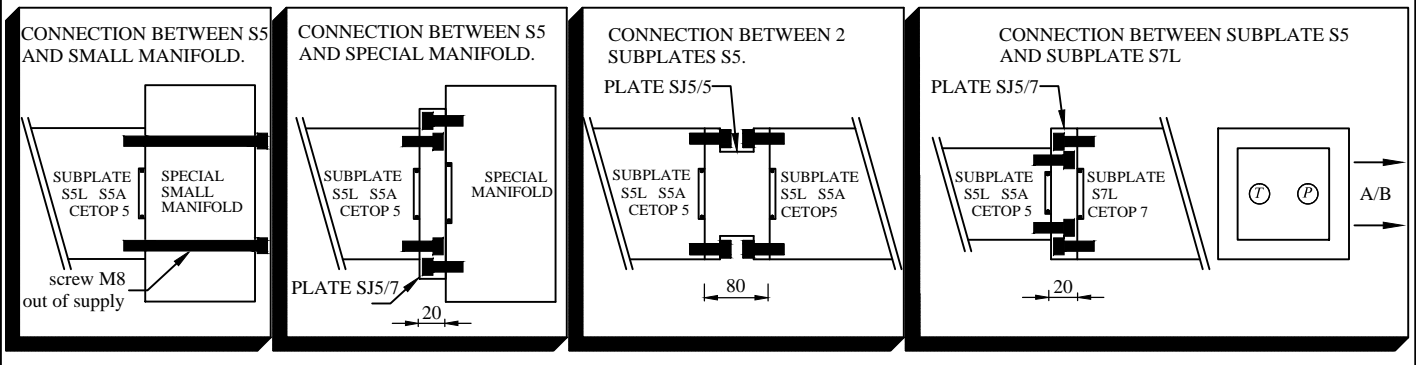
A12/1

- Service pressure 700B for steel - 300B for aluminium alloy.
- Possibility to connect manifold S3 or S5 on special manifold.
- Possibility to connect several manifold S3 or S5.
- Achieve the continuity from P and T on each manifold.

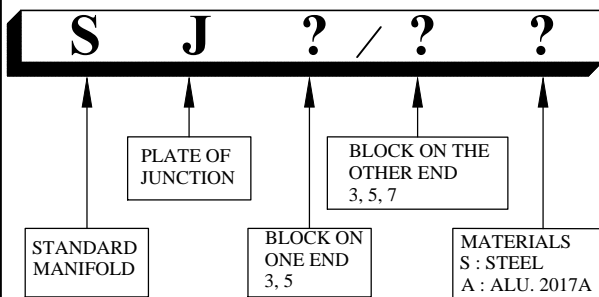
TO CONNECT MULTI-STATION CETOP 3 (S3L or S3A)



TO CONNECT MULTI-STATION CETOP 5 (S5L or S5A)



MODEL CODE



DIMENSIONS

| MODEL | SIZE | O-RING Nbr delivered | screw CHC 12.9 M8*25 delivered | WEIGHT kg | |
|---------|------------|-------------------------|--------------------------------------|-----------|-----|
| | | | | STEEL | ALU |
| SJ3/3-- | 70*70*80 | 4 Ø25.07*2.62 | 8 | 3 | 1 |
| SJ3/5-- | 100*100*20 | 2 Ø25.07*2.62 | 8 | 1.6 | 0.5 |
| | | 2 Ø32.99*2.62 | | | |
| SJ5/5-- | 100*100*80 | 4 Ø32.99*2.62 | 8 | 6.3 | 2.2 |
| SJ5/7-- | 130*130*20 | 2 Ø32.99*2.62 | 12 | 2.6 | 0.9 |
| | | 2 Ø40.95*2.62 | | | |